

---

• JOHNER STOCK FARM •

---

J.S.F

---

• SPECKLE PARK •

---

**2023  
Private Treaty  
Bulls**



**Maidstone, Saskatchewan**

**David: 306-893-2714 • Justin: 306-248-1305**

**[www.johnerstockfarm.net](http://www.johnerstockfarm.net)**



# Welcome

Welcome to the 2023 JSF Bull Sale offering. As always, all the bulls here at JSF sell privately off the farm. Just as we have in previous years, we continue to offer honest, hardworking bulls to our customers that will go out and do their job.

We have been working hard with our selection of the most consistent Speckle Park genetics we can put together. As the commercial market grows, we need to keep high quality hitting the market.

Many producers continue to sit on the fence of the idea, 'Why Speckle Park?' Well... let's talk advantages of the breed!

As we are commercial producers ourselves, we use our bulls and sire groups of bulls to better educate our customers on what they might get. Cross breeding with Speckle Park provides you with a Hybrid Vigor no matter the breed you cross it with.

Are they big enough you ask? By using high quality bulls, you bet they are! I have heard in the coming years that demand for smaller cuts of meat will potentially come to the forefront. However, I don't think that will be the case, those big, fleshy steers are the most desirable down the line in any market. And yes, Speckle Park can get there. They may not finish out at 1700lbs but their consistently high yielding, prime carcasses will provide you with the same amount of meat as their heavier counterparts. We have always said that if the feed lots could get the premiums they deserve for Prime and Yield grades, there wouldn't be enough Speckle bulls out there to serve demand.

Another big advantage to utilizing a Speckle bull in your breeding program, if for the doability. I have talked to customers that have been using Speckle bulls in their programs for many years and keep females back as mama cows, and they all preach about how well they winter when conditions are tough, and how well they held their condition while raising calves through the extreme drought we had summer 2021. You don't need numbers of figures, EPD's or anything on paper for that matter when you see it and experience it firsthand with a Speckle Park. We have done many trial runs here at JSF and it's clear to see that they just get it done. When you can run a commercial cow at the most minimal costs it helps on the back end when those calves go to town.

So, to summarize, higher carcass yields, feed efficiency, longevity, maternal power, doability, and "They just stand out" all sounds like a good place to start. As I said, if you're on the fence of using a Speckle Park bull and you take pride in having a highly functional cow herd that can get it done without a ton of extras, have a look through the offering in the following pages and we would be happy to get you started.

We will also have a selection of two-year-old bulls for sale that already have a breeding season under their belts here at JSF. With the advantage of a Private Treaty Sale, JSF will hold your bulls with half down and they will be semen tested and delivered to your farm or as close as possible for the beginning of breeding season in the spring. If you have any questions, please give myself or Dave a call and we will be happy to help with your selections.

*Justin*



**DAVID & ARLINDA JOHNER**  
Box 52, Maidstone, SK S0M 1M0  
P: 306-893-2714 C: 780-205-4630  
jsf3@sasktel.net



**JUSTIN & AMBER AND FAMILY**  
Box 696, Maidstone, SK S0M 1M0  
P: 306-893-2667 C: 306-248-1305  
johnerbulls@gmail.com



**CHRIS ZAUGG**

• JOHNER STOCK FARM •

**J.S.F**

• SPECKLE PARK •

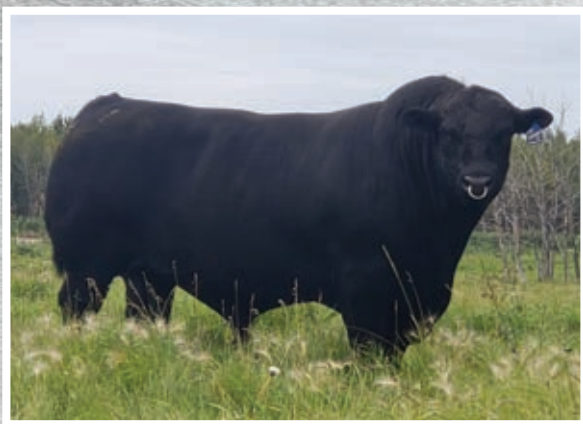
www.johnerstockfarm.net



## A 6x4 grid of 24 photographs capturing various moments from Canadian stock shows and rodeos. The images depict a wide range of activities: showcasing prize-winning cattle (primarily Angus and Hereford breeds) on show pens; people, including cowboys and spectators, interacting with the animals; and event-specific scenes like a rodeo arena, a stock show trailer, and a group photo of winners. Signage for events such as 'STOCKADE ROUNDUP', 'CANADIAN WESTERN 1987 Agribition', 'DENZIL STOCK SHOW 1982', and 'HUTTENLOCH FARM FAIR' is visible in several photos. The overall theme is the celebration of Canadian stock farming and rodeo culture.



# JSF Unmarked 2D Sire Group



- Added Performance
- Larger Testicles
- Overall Balance
- Highly Maternal
- Very Consistent
- Calving Ease Without Sacrificing Performance

**JSF Unmarked 2D**



**Axel 17K**

**LOT 17K**

100%

JSF 17K

CAN15536

**JSF *Axel* 17K**

February 23, 2022

HS UNTAPPED 3A  
**JSF UNMARKED 2D**  
 JENCREST YAVONNA 6Y  
 CODIAK SPENCER GNK 52B  
**JSF FLORA 9E**  
 JSF FLORA 8C

WEIGHTS	BW	WW	DEC 8	Q-Select: Leptin/PMCH/1GF2/CRH
	80	710	877	CT AA CC CG



**LOT 30K**

96.9%

JSK 30K

UNR16533

**JSF *Kenworth* 30K**

MARCH 1, 2022

HS UNTAPPED 3A

**JSF UNMARKED 2D**

JENCREST YAVONNA 6Y

RIVER HILL SHOW BIZ 93S

**JSF MISS SAGE 26Z**

MONNERY RIVER JFN 5S

WEIGHTS	BW	WW	DEC 8	Q-Select: Leptin/PMCH/1GF2/CRH
	80	608	750	CC AA CC CC



*Kenworth 30K*

**LOT 40K**

93.8%

JSF 40K

UNR16654

**JSF *Skyfall* 40K**

March 5, 2022

HS UNTAPPED 3A

**JSF UNMARKED 2D**

JENCREST YAVONNA 6Y

CALAMASUE 17P

**COLD CREEK SKYLARK 2X**

CANDY OF CCC 02P

WEIGHTS	BW	WW	DEC 8	Q-Select: Leptin/PMCH/1GF2/CRH
	77	675	745	CT AA CC CC



*Skyfall 40K*

**LOT 48K**

96.9%

JSF 48K

CAN15538

**JSF *Knight Rider* 48K**

March 7, 2022

HS UNTAPPED 3A

**JSF UNMARKED 2D**

JENCREST YAVONNA 6Y

CODIAK SPENCER GNK 52B

**JSF ESSENCE 14F**

JSF ESSENCE 15D

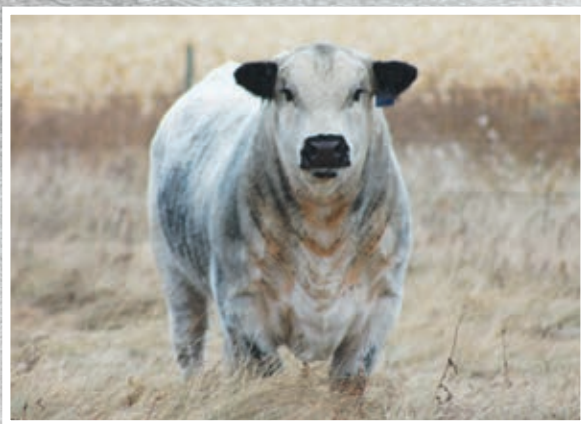
WEIGHTS	BW	WW	DEC 8	Q-Select: Leptin/PMCH/1GF2/CRH
	93	690	835	CC AA CC CC



*Knight Rider 48K*



# Moovin Zpotz Frank 19F Sire Group



- Extra Length
- Added Testicle Size
- Highly Maternal
- Very Well Balanced
- High Performance

**Moovin Zpotz Frank 19F**



**Knuckles 11K**

**LOT 11K**

93.8%

JSF 11K

UNR16525

**JSF *Knuckles* 11K**

February 19, 2022

CN ZPOTZ ZAZU 2Z  
**MOOVIN ZPOTZ FRANK 19F**  
 MOOVIN ZPOTZ ALBERTA 6A  
 SPOTS 'N SPROUTS WARRIOR 103W  
**JSF KALI 10Z**  
 MONNERY RIVER 6N

WEIGHTS	BW	WW	DEC 8	Q-Select: Leptin/PMCH/1GF2/CRH
	83	720	880	TT AT CT CG



**LOT 22K**

100%

JSF 22K

UNR16685

February 27, 2022

**JSF *Air Force* 22K**

CN ZPOTZ ZAZU 2Z  
**MOOVIN ZPOTZ FRANK 19F**  
 MOOVIN ZPOTZ ALBERTA 6A

JSF UNMARKED 2D  
**JSF MISS WHISKEY 27F**  
 JSF MISS WHISKEY 3C

WEIGHTS	BW	WW	DEC 8	Q-Select: Leptin/PMCH/1GF2/CRH
	90	636	870	CT AA CC CC

*Airforce 22K**Kingsman 31K***LOT 31K**

96.9%

JSF 31K

UNR16534

March 2, 2022

**JSF *Kingsman* 31K**

CN ZPOTZ ZAZU 2Z  
**MOOVIN ZPOTZ FRANK 19F**  
 MOOVIN ZPOTZ ALBERTA 6A  
 RIVER HILL SHOW BIZ 93S  
**MONNERY RIVER JFN 3X**  
 MONNERY RIVER JFN 3T

WEIGHTS	BW	WW	DEC 8	Q-Select: Leptin/PMCH/1GF2/CRH
	77	646	862	CT AA CT CC



# JSF Creed 1F Sire Group



JSF Creed 1F

- Phenotype
- Style
- Extra Rib
- Calving Ease



Knockout 18K

**LOT 18K**

100%

JSF 18K

UNR16530

**JSF *Knockout* 18K**

February 24, 2022

MOOVIN ZPOTZ DART 37D  
**JSF CREED 1F**  
 JSF ESSENCE 37D  
 CODIAK SPENCER GNK 52B  
**JSF PADDY 54F**  
 REDNECK JSF PADDY 6B

WEIGHTS	BW	WW	DEC 8	Q-Select: Leptin/PMCH/1GF2/CRH
	73	635	800	CT AA CT CC



Kingston 37K

**LOT 37K**

96.9%

JSF 37K

UNR16536

**JSF *Kingston* 37K**

March 3, 2022

MOOVIN ZPOTZ DART 37D  
**JSF CREED 1F**  
 JSF ESSENCE 37D  
 JSF BLINDSIDE 25C  
**HIGHMARK GENNI 20G**  
 HIGHMARK ST DELIGHT 4D

WEIGHTS	BW	WW	DEC 5	Q-Select: Leptin/PMCH/1GF2/CRH
	68	600	750	TT AT CT CC



# JSF Impact 5H



JSF Impact 5H

- Muscle and Growth
- Calving Ease
- Maternal Quality
- Quality Feet
- Testical Development



Night Train 50K

**LOT 50K**

96.9%

JSF 50K

**JSF *Night Train* 50K**

UNR16538

March 8, 2022

JSF WALL STREET 36E  
**JSF IMPACT 5H**  
 JENCREST YAVONNA 6Y  
 JSF CREED 1F  
**JSF FLORA 44H**  
 MONNERY RIVER 7W

WEIGHTS	BW	WW	DEC 8	Q-Select: Leptin/PMCH/1GF2/CRH
	75	605	760	CT AA CT CC

**LOT 65K**

96.9%

JSF 65K

**JSF *Titan* 65K**

CAN15539

March 19, 2022

JSF WALL STREET 36E  
**JSF IMPACT 5H**  
 JENCREST YAVONNA 6Y  
 CODIAK HEAR THE GHOST GNK 22Z  
**JSF FLORA 8C**  
 MONNERY RIVER 7W

WEIGHTS	BW	WW	DEC 8	Q-Select: Leptin/PMCH/1GF2/CRH
	90	630	770	CT AA CT CC



Titan 65K



# Maungahina Promise



Maungahina Promise

- Power
- Performance
- Increased Growth
- Highly Maternal
- OutCross Genetics



Promise 55K

**LOT 55K**

**JSF Promise 55K**

JSF 55K

UNR16655

March 10, 2022

MAUNGAHINA LAWRIN  
**MAUNGAHINA PROMISE**  
 MAUNGAHINA J13  
 CODIAK CALVIN GNK 58Y  
**JSF MISS SAGE 19B**  
 MISS SAGE 5R

WEIGHTS	BW	WW	DEC 8	Q-Select: Leptin/PMCH/1GF2/CRH
	108	650	790	CT AT CC CC

**LOT 66K**

**JSF Promise 66K**

JSF 66K

UNR16656

March 21, 2022

MAUNGAHINA LAWRIN  
**MAUNGAHINA PROMISE**  
 MAUNGAHINA J13  
 CODIAK HEAR THE GHOST GNK 22Z  
**JSF MIDNIGHT LADY 2C**  
 PONDEROSA SPOTS A ROARIN 19Y

WEIGHTS	BW	WW	DEC 8	Q-Select: Leptin/PMCH/1GF2/CRH
	110	720	912	TT AA CC GG



Promise 66K



# JSF Transfer 5G



JSF Transfer 5G

- Maternal
- Calving Ease
- OutCross Genetics
- Maternal Quality



Knox 32K

**LOT 32K**

96.9%

JSK 32K

UNR16535

**JSF Knox 32K**

March 2, 2022

MOOVIN ZPOTZ DART 37D  
**JSF TRANSFER 5G**  
 MISS SAGE 5R  
 MOOVIN ZPOTZ FRANK 19F  
**JSF RIVER 81H**  
 MONNERY RIVER 3U

WEIGHTS	BW	WW	DEC 8	Q-Select: Leptin/PMCH/1GF2/CRH		
	80	580	720	TT	AT	CT CG



# JSF Justified 36H



JSF Justified 36H

- OutCross Genetics
- Frame Builder
- Geno & Phenotyped Genetics



Kid Rock 21K

**LOT 21K**

96.9%

JSF 21K

UNR16531

**JSF Kid Rock 21K**

February 26, 2022

MOOVIN ZPOTZ FRANK 19F  
**JSF JUSTIFIED 36H**  
 COLD CREEK SKYLARK 2X  
 CN ZPOTZ XECUTIVE DECISION 1X  
**UNLIMITEDSPOTS GLAMOUR 13G**  
 UNLIMITEDSPOTS DEMI 10D

WEIGHTS	BW	WW	DEC 8	Q-Select: Leptin/PMCH/1GF2/CRH
	77	682	898	CT AT CT CG



# ParkVale Mark



ParkVale Mark

- Growth
- Testical Developed
- OutCross Genetics
- Highly Maternal



M61 Mark 51K

**LOT 51K**

100%

JSF 51K

**JSF M61 Mark 51K**

UNR16652

March 9, 2022

SPOTS 'N SPROUTS STANDS ALONE  
**PARKVALE MARK**  
 PARKVALE HARRIET  
 RAVENWORTH HORIZON 103A  
**PURA VIDA CORDOBA 69C**  
 STYALS SIX 16P

WEIGHTS	BW	WW	DEC 8	Q-Select: Leptin/PMCH/1GF2/CRH		
	85	660	765	CT	AT	CT CG



## US Bump & Grind 21H



US Bump & Grind 21H

- Growth
- Testicle Development
- Maternal Genetics



**LOT 53K**

93.8%

JSF 53K

UNR16539

**JSF *Grind* 53K**

March 9, 2022

SPOTS 'N SPROUTS CAJUN 114C  
**US BUMP & GRIND 21H**  
 SPOTS 'N SPROUTS 12X  
 HS UNTAPPED 3A  
**JSF SASHA 35C**  
 JSF SASHA 22Z

WEIGHTS	BW	WW	DEC 8	Q-Select: Leptin/PMCH/1GF2/CRH
	80	615	758	CT AT TT CC



Dr. Wennekamp

Dr. Berg

Dr. Newman

Dr. Hall

Dr. Michalyk

Dr. Schachtel

Dr. Heaver

Dr. Hanley

Dr. Jacobson

**780 875-5733**

**LLOYDMINSTER ANIMAL HOSPITAL**



# NB NOVLAN BROS

## Headquarters:

#47 1st Avenue  
Box 89, Paradise Hill SK

**Phone:** 306-344-4448

**Toll Free:** 1-877-344-4433

**Email:** sales@novlanbros.com

## Lloydminster:

AB-16 E, Lloydminster, SK

**Phone:** 306-825-6141

## North Battleford:

10022 Thatcher Ave, North Battleford, SK

**Phone:** 306-446-2223

Since our inception in 1929, Novlan Brothers has proudly grown to serve as an important part of our community. As a full service Ford and New Holland dealership, we offer first class sales, financing, service and parts to our valued customers.

**Follow us  
on social  
media:**



**novlanbros.com**



## MAXIMIZE YOUR HERD

From parentage to performance traits, Quantum Genetix can help you evaluate and manage your herd with a simple hair or tissue sample. Take the guesswork out of improving your weaning weights, carcass gains, and rib eye area by selecting a Q-select tested bull. See results within one generation.

Kirsty McCormack | Sales

403 710 9785

kmcormack@quantumgenetix.com

www.quantumgenetix.com



## Davis-Rairdan



## Davis-Rairdan Embryo Transplants Ltd.

### SERVICES OFFERED:

- On-farm freezing & collection
- Donor care facility
- Recipient herd
- Licensed facility for embryo exports
- Genetic marketing & selection

Davis-Rairdan International

Box 590

Crossfield, Alberta, Canada T0M 0S0

Phone (403) 946-4551

Fax (403) 946-5093

E-mail: embryos@davis-rairdan.com

**www.davis-rairdan.com**







TURTLEFORD & DISTRICT

**Home, Agro & Petroleum:** (306) 845-2162

**Admin:** (306) 845-2222

**Grocery Store:** (306) 845-2222

**Maidstone Home & Agro:** (306) 893-1222

INTEGRITY — COMMUNITY — TEAMWORK — GROWTH



*You're at home here.*  
Turtleford & District

• Feed Specialists • In-Store Agronomist • Bulk Order Feed Discount



**VF VALLEY FORD**  
NORTH BATTLEFORD

**Ford**

**Sales • Service • Rentals • Body Shop • Parts**

**Quick Lane**  
TIRE & AUTO CENTER

- Tires
- Wheel Alignments
- Oil & Filters
- Shocks & Struts

**[www.valleyfordnb.ca](http://www.valleyfordnb.ca)**

**Monday - Friday: 8am - 5pm**  
**Saturday: 9am - 2pm**

**2222 - 100th Street**      **306-445-4495**  
**North Battleford, SK**      **1-800-667-1320**

Special thanks to all our advertisers for their support!

We would like to thank all of our advertisers in our 2023 book. We work closely with these companies on a day to day basis. If you are ever in need of anything these businesses have to offer, please don't hesitate to give any one of them a call.



Thank You  
**JAD Speckle Park**

Like Father

Like Son



JSF CREED 1F



JAD JSF YELLOWSTONE 10K



JSF MISS SAGE 19B | MATERNAL GRANDDAM



JSF MISS SAGE 62F | MOTHER OF YELLOWSTONE



HS UNTAPPED 3A | MATERNAL GRANDSIRE



JSF ESSENCE 37D | PATERNAL GRANDDAM



MOOVIN ZPOTZ DART 37D | GRANDSIRE

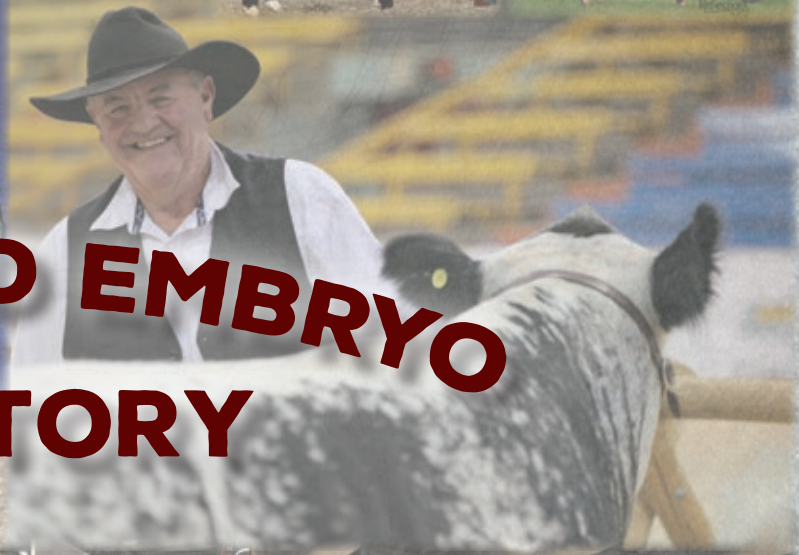


JSF TRADE SECRET 11A | MATERNAL GRANDSIRE





**Agribition**  
2014



# SEMEN AND EMBRYO DIRECTORY







**DAVID & ARLINDA JOHNER**  
Box 52, Maidstone, SK S0M 1M0  
P: 306-893-2714 C: 780-205-4630  
jsf3@sasktel.net



**JUSTIN & AMBER AND FAMILY**  
Box 696, Maidstone, SK S0M 1M0  
P: 306-893-2667 C: 306-248-1305  
johnerbulls@gmail.com



**CHRIS ZAUGG**  
P: 306-903-8700  
christophzaugg@outlook.com

# Welcome

Johner Stock Farm has been in the Seedstock industry for 50+ years raising Herefords, Black and Red Angus and Speckle Park. With many customers using all 4 breeds bulls along the way. With all of them saying they have stayed with JSF due to so much consistency over all the breeds. It doesn't matter what breed, they have all been bred the same way... "PREDICTABLE."

As we navigate through this ever changing world over the past 50+ years, JSF strives to raise, breed and create cattle that will produce and stand the test of time all over the world.

JSF is no stranger to marketing all over the globe. We have had Herefords in Argentina, Brazil, Austria, and New Zealand just to name a few, and it rolls right through with the Speckle Park spanning the globe as well. JSF is one of the only exhibits to see all 50 years at the world renowned Canadian Western Agribition.

With Speckle Park being a relatively small and somewhat new breed being introduced around the world they have so much to offer the industry. In terms of meat, carcass, doability, feed conversion, IMF, marbling and they darn well just look cool. They can adapt to -40 winters in Canada to +50 temperatures in Northern Queensland in Australia. This is a breed that will make its mark around the world.

The Speckle Park breed has taken the cattle industry by storm in the 12+ years. JSF strives to breed hard working, predictable cattle with incorporating ultrasound data, hoof to hook data, leptin and tenderness gene testing to make consistency come to the forefront of our customers.

If you navigate your way through the cows and bulls you will find sons of dam cows, mother daughter combinations making their way to the top. You find high milk, exceptional growth and consistency throughout all genetics. We work hard at what we do to make the best product for what ever application you are wanting to achieve.

*Justin*

Semen stored at both Bow Valley and Alta Genetics.

Embryos are stored at Davis-Rardan.

• JOHNER STOCK FARM •

J.S.F

• SPECKLE PARK •

[www.johnerstockfarm.net](http://www.johnerstockfarm.net)









## JSF *Creed* 1F

100%

JSF 1F

8528

February 7, 2018

MOOVIN ZPOTZ BARCODE 60B

**MOOVIN ZPOTZ DART 37D**

COLD CREEK UNITY 23U

HS UNTAPPED 3A

**JSF ESSENCE 37D**

MONNERY RIVER JFN 6X

WEIGHTS	BW	WW	YW	Q-Select: Leptin/PMCH/1GF2/CRH		
	69	864	1275	TT	AA	TT CC
WEIGHTS	Rump	Rib	Ribeye	IMF	Scan Age	Scan Wt
	0.87	0.72	15.2	3.71	13 mo	1300
						Homo Polled/Homo Blk
						Non-carrier

JSF 1F



## HS *Untapped* 3A

100%

HSF 3A

4742

April 16, 2013

BELMORAL'S SPECIAL 99H

**A & W 15R**

TRIPLE A GEM 15G

P.A.R. RILEY 2R

**NOTTA 2R PRETENDER 4T**

NOTTA PRETENDER 64P

WEIGHTS	BW	WW	YW	Q-Select: Leptin/PMCH/1GF2/CRH		
	93	870	1250			
WEIGHTS	Rump	Rib	Ribeye	IMF	Scan Age	Scan Wt
	1.24	0.95	16.3	5.97		
						Homo Polled/Homo Blk
						Non-carrier

Owned with HS Land & Cattle

HSF 3A



## MOOVIN ZPOTZ *Dart* 37D

100%

BMZ 37D

6666

March 18, 2016

MOOVIN ZPOTZ UNTOUCHABLE 4U

**MOOVIN ZPOTZ BARCODE 60B**

D.L.R. LILY 17S

HWY 4 SPECKLE PARK 1R

**COLD CREEK UNITY 23U**

NICOLE OF P.A.R. 23N

WEIGHTS	BW	WW	YW	Q-Select: Leptin/PMCH/1GF2/CRH		
	78	700	1040	TT	AA	CC CG
WEIGHTS	Rump	Rib	Ribeye	IMF	Scan Age	Scan Wt
	0.21	0.26	11.7	3.12	12 mo	1040
						Homo Polled/Homo Blk
						Non-carrier

Owned with Red Maple Speckle Park

BMZ 37D





**BMZ 19F**

# MOOVIN ZPOTZ *Frank* 19F

100%

BMZ 19F

9076

April 1, 2018

LEGACY TURNPIKE CRUISER 27T  
**CN ZPOTZ ZAZU 2Z**  
 PRAIRIE HILL NIRVANA 4N  
 MOOVIN ZPOTZ UNTOUCHABLE 4U  
**MOOVIN ZPOTZ ALBERTA 6A**  
 D.L.R. ODELLE 15W

ULTRASOUND WEIGHTS	BW	WW	YW	Q-Select: Leptin/PMCH/1GF2/CRH		
	97	740	1190	TT AT CC CG		
	Rump	Rib	Ribeye	IMF	Scan Age	Scan Wt
	0.46	0.44	15.8	3.39	13 mo	1210
	Homo Polled/Homo Blk Non-carrier					



**JSF 5H**

# JSF *Impact* 5H

100%

JSF 5H

11161

February 1, 2020

ASPEN ACRES T.N.T. 4Y  
**JSF WALL STREET 36E**  
 REDNECK WHISKEY 7W  
 UPTO SPECS ULYSSES 25U  
**JENCREST YAVONNA 6Y**  
 RITA OF P.A.R. 14R

ULTRASOUND WEIGHTS	BW	WW	YW	Q-Select: Leptin/PMCH/1GF2/CRH		
	85	810	1250	CC AA CC CG		
	Rump	Rib	Ribeye	IMF	Scan Age	Scan Wt
	0.64	0.57	16.8	4.00	13 mo	1275
	Homo Polled/Homo Blk Carrier					



**JSF 36H**

# JSF *Justified* 36H

93.8%

JSF 36H

11159

February 22, 2020

CN ZPOTZ ZAZU 2Z  
**MOOVIN ZPOTZ FRANK 19F**  
 MOOVIN ZPOTZ ALBERTA 6A  
 CALAMASUE 46U  
**COLD CREEK SKYLARK 2X**  
 CANDY OF CCC 02P

ULTRASOUND WEIGHTS	BW	WW	YW	Q-Select: Leptin/PMCH/1GF2/CRH		
	89	705	1020	TT AA CC CG		
	Rump	Rib	Ribeye	IMF	Scan Age	Scan Wt
	0.39	0.28	11.0	3.01	10 mo	990
	Homo Polled/Homo Blk Non-carrier					





**DHB 24E**

## WOLF LAKE *Bob* 24E

100%

DHB 24E

7430

February 4, 2017

RAVENWORTH KLEOS 3Y  
**RAVENWORTH INVICTUS 103C**  
 RAVENWORTH NORTHERN STAR 101A  
 RIVER HILL 12X ZAAR 7Z  
**RAVENWORTH ASPEN 118C**  
 SPOTS 'N SPROUTS 31A

ULTRASOUND WEIGHTS	BW	WW	YW	Q-Select: Leptin/PMCH/1GF2/CRH			
	65	800	1320	CT AA CC CG			
ULTRASOUND WEIGHTS	Rump	Rib	Ribeye	IMF	Scan Age	Scan Wt	Homo Polled/Homo Blk
	0.69	0.61	14.1	3.46	14 mo	1390	Non-carrier



**GNK 52B**

## CODIAK *Spencer* GNK 52B

100%

GNK 52B

5270

May 30, 2014

CODIAK PHLEP GNK 3P  
**CODIAK OSCAR GNK 8S**  
 CODIAK MATEUSA RKW 63M  
 RAVEN MEADOWS MAGNUM 10N  
**CODIAK WILLA GNK 13W**  
 CODIAK MISS CARLA RKW 21M

ULTRASOUND WEIGHTS	BW	WW	YW	Q-Select: Leptin/PMCH/1GF2/CRH			
	72						
ULTRASOUND WEIGHTS	Rump	Rib	Ribeye	IMF	Scan Age	Scan Wt	Homo Polled/Homo Blk
	0.19	0.20	16.1	2.52	18 mo	1700	Non-carrier



**SDS 4B**

## REDNECK JSF *Whiskey* 4B

100%

SDS 4B

4680

January 10, 2014

REDNECK WILD WILLY 2W  
**REDNECK FERDINAND 14Y**  
 REDNECK RANCH'S U ALMOST FROZE  
 REDNECK RANCH'S TEDDY 5T  
**REDNECK WHISKEY 7W**  
 REDNECK RANCH'S SCARLET 1S

ULTRASOUND WEIGHTS	BW	WW	YW	Q-Select: Leptin/PMCH/1GF2/CRH			
	102	900	1400	TT AA CC CG			
ULTRASOUND WEIGHTS	Rump	Rib	Ribeye	IMF	Scan Age	Scan Wt	Homo Polled/Hetro Blk
	1.22	0.80	15.8	4.76	18 mo	2000	Carrier

Owned with Minnamurra Pastoral Co





# DOUBLE JSF *Rawhide* 260D

100% SWS 260D 6460

April 2, 2016

P.A.R. LITTLE TNT 88W  
**P.A.R. ASCAPE 89A**  
 P.A.R. MONALISA 89X  
 UNEEDA WONDERBAR 05W  
**YASEMIN OF UNEEDA 260Y**  
 UNA OF UNEEDA 60U

WEIGHTS	BW	WW	YW	Q-Select: Leptin/PMCH/1GF2/CRH			
	80	860	1280				
WEIGHTS	Rump	Rib	Ribeye	IMF	Scan Age	Scan Wt	Homo Polled/Homo Blk
	0.23	0.26	15.5	2.82	13 mo	1300	Carrier

Owned with Minnamurra Pastoral Co



# JSF *Dynasty* 23H

100% JSF 23H

11226

February 16, 2020

CN ZPOTZ ZAZU 2Z  
**MOOVIN ZPOTZ FRANK 19F**  
 MOOVIN ZPOTZ ALBERTA 6A  
 CODIAK HEAR THE GHOST GNK 22Z  
**JSF MIDNIGHT LADY 2C**  
 PONDEROSA SPOTS A ROARIN 19Y

WEIGHTS	BW	WW	YW	Q-Select: Leptin/PMCH/1GF2/CRH			
	83	820	1250				TT AA CC CG
WEIGHTS	Rump	Rib	Ribeye	IMF	Scan Age	Scan Wt	Homo Polled/Homo Blk
	0.51	0.47	15.0	4.20	12 mo	1250	Non-carrier

Owned with Minnamurra Pastoral Co

**50+ years raising quality, predictable,  
 consistent beef cattle to fit all market needs!**





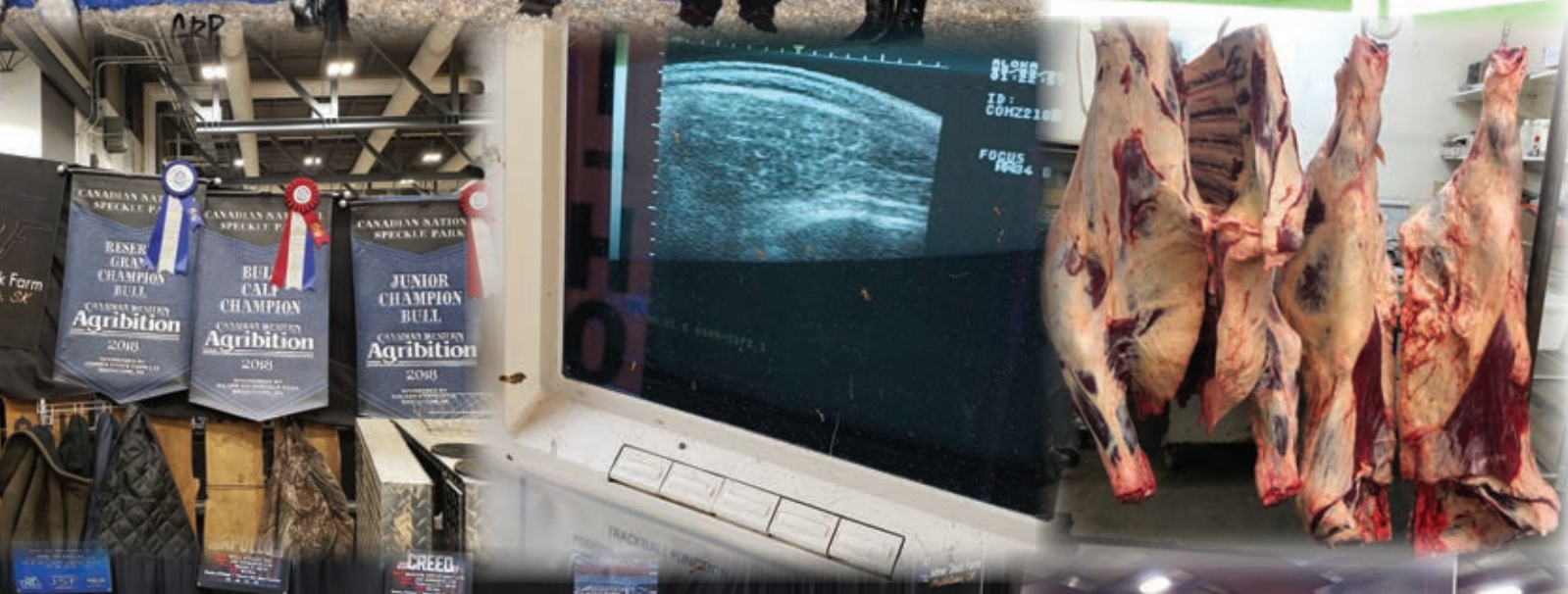
**Agribition**  
**2014**







2014







## MONNERY *River* 7W

87.5%

JFN 7W

3117

May 17, 2009

P.A.R. MOO FASSA 03M  
**RIVER HILL SHOW BIZ 93S**  
 PRAIRIE HILL FANCY PANTS 93J  
 P.A.R. HEM 7L  
**MONNERY RIVER 7P**  
 MONNERY RIVER 62L

WEIGHTS	BW	WW	YW	Q-Select: Leptin/PMCH/1GF2/CRH			
	88						
	Rump	Rib	Ribeye	IMF	Scan Age	Scan Wt	Homo Polled/Homo Blk
							Non-carrier



## JSF *Flora* 8C

93.8%

JSF 8C

5550

March 1, 2015

LEGACY UNRIVALED 12U  
**CODIAK HEAR THE GHOST GNK 22Z**  
 CODIAK URSULA GNK 3U  
 RIVER HILL SHOW BIZ 93S  
**MONNERY RIVER 7P**  
 MONNERY RIVER 7P

WEIGHTS	BW	WW	YW	Q-Select: Leptin/PMCH/1GF2/CRH			
	71	618	814				
	Rump	Rib	Ribeye	IMF	Scan Age	Scan Wt	Homo Polled/Homo Blk
	0.39	0.27	10.3	6.07	13 mo		Non-carrier



## JSF *Flora* 9E

100%

JSF 9E

7161

February 18, 2017

CODIAK OSCAR GNK 8S  
**CODIAK SPENCER GNK 52B**  
 CODIAK WILLA GNK 13W  
 CODIAK HEAR THE GHOST GNK 22Z  
**JSF FLORA 8C**  
 MONNERY RIVER 7P

WEIGHTS	BW	WW	YW	Q-Select: Leptin/PMCH/1GF2/CRH			
	63	602	864	CT AA CT CG			
	Rump	Rib	Ribeye	IMF	Scan Age	Scan Wt	Homo Polled/Homo Blk
	0.46	0.47	11.2	3.90	13 mo		Carrier



## REDNECK *Whiskey* 7W

100%

SDS 7W

2992

April 5, 2009

ASPEN ACRES RADAR 5R  
**REDNECK RANCH'S TEDDY 5T**  
 UPTO SPECS LACEY 30L  
 P.A.R. MOO FASSA 03M  
**REDNECK RANCH'S SCARLET 1S**  
 PRAIRIE HILL PADDY 233P

WEIGHTS	BW	WW	YW	Q-Select: Leptin/PMCH/1GF2/CRH			
	72						
	Rump	Rib	Ribeye	IMF	Scan Age	Scan Wt	Homo Polled/Homo Blk
							Non-carrier





## JSF *Miss Whiskey* 3C

100% JSF 3C 5549 February 23, 2015

LEGACY UNRIVALED 12U  
**CODIAK HEAR THE GHOST GNK 22Z**  
 CODIAK URSULA GNK 3U  
 REDNECK RANCH'S TEDDY 5T  
**REDNECK WHISKEY 7W**  
 REDNECK RANCH'S SCARLET 1S

ULTRASOUND WEIGHTS	BW	WW	YW	Q-Select: Leptin/PMCH/1GF2/CRH			
	72	616	840	CT AA CC CC			
	Rump	Rib	Ribeye	IMF	Scan Age	Scan Wt	Homo Polled/Homo Blk
	0.35	0.51	10.9	5.20	13 mo		Non-carrier



## JSF *Paddy* 34D

100% JSF 34D 6229 March 10, 2016

LEGACY UNRIVALED 12U  
**CODIAK HEAR THE GHOST GNK 22Z**  
 CODIAK URSULA GNK 3U  
 PRAIRIE HILL MASTERPLAN II 87L  
**PRAIRIE HILL PADDY 233P**  
 PRAIRIE HILL KERRY 10K

ULTRASOUND WEIGHTS	BW	WW	YW	Q-Select: Leptin/PMCH/1GF2/CRH			
	78	696	915	CT AA CC CG			
	Rump	Rib	Ribeye	IMF	Scan Age	Scan Wt	Homo Polled/Homo Blk
	0.25	0.25	9.9	3.86	13 mo		Non-carrier



## JSF *Miss Sage* 19B

100% JSF 19B 4892 March 15, 2014

CODIAK TRUMP GNK 20T  
**CODIAK CALVIN GNK 58Y**  
 CODIAK SILVER FOX RKW 64L  
 SAGE LAD 2L  
**MISS SAGE 5R**  
 MISS SAGE 5M

ULTRASOUND WEIGHTS	BW	WW	YW	Q-Select: Leptin/PMCH/1GF2/CRH			
	78						
	Rump	Rib	Ribeye	IMF	Scan Age	Scan Wt	Homo Polled/Hetro Blk
							Non-carrier



## JSF *Miss Sage* 62F

100% JSF 62F 8480 April 21, 2018

YOGI GOES REDNECK 7Y  
**JSF TRADE SECRET 11A**  
 MONNERY RIVER 7W  
 CODIAK CALVIN GNK 58Y  
**JSF MISS SAGE 19B**  
 MISS SAGE 5R

ULTRASOUND WEIGHTS	BW	WW	YW	Q-Select: Leptin/PMCH/1GF2/CRH			
	72	598	790	TT AT CT CG			
	Rump	Rib	Ribeye	IMF	Scan Age	Scan Wt	Homo Polled/Homo Blk
	0.26	0.16	10.0	3.64	13 mo		Non-carrier

Owned by JAD Agriculture Australia





SSU 6Y

## JENCREST *Yavonna* 6Y

100%

SSU 6Y

3489

February 14, 2011

RAVEN MEADOWS MAGNUM 10N  
**UPTO SPECS ULYSSES 25U**  
 PRAIRIE HILL REBA 154F  
 P.A.R. MR. POWERSTROKE 4M  
**RITA OF P.A.R. 14R**  
 MANDY OF P.A.R. 10M

ULTRASONIC WEIGHTS	BW	WW	YW	Q-Select: Leptin/PMCH/1GF2/CRH			
	85						
	Rump	Rib	Ribeye	IMF	Scan Age	Scan Wt	Homo Polled/Homo Blk
							Carrier



JSF 2G

## JSF *Yavonna* 2G

100%

JSF 2G

10148

January 22, 2019

MOOVIN ZPOTZ BARCODE 60B  
**MOOVIN ZPOTZ DART 37D**  
 COLD CREEK UNITY 23U  
 UPTO SPECS ULYSSES 25U  
**JENCREST YAVONNA 6Y**  
 RITA OF P.A.R. 14R

ULTRASONIC WEIGHTS	BW	WW	YW	Q-Select: Leptin/PMCH/1GF2/CRH			
	59	552	770	CT AA CT CG			
	Rump	Rib	Ribeye	IMF	Scan Age	Scan Wt	Homo Polled/Homo Blk
	0.41	0.40	10.3	9.24	17 mo		Non-carrier



KTM 19Y

## PONDEROSA *Spots A Roarin'* 19Y

96.6%

KTM 19Y

3662

April 3, 2011

P.A.R. SHARP SHOOTER 60S  
**HEARTRIDGE ARIES 01W**  
 PONDEROSA TIFFANY 06T  
 CLEAR VIEW TY 205R  
**PONDEROSA MIDNIGHT LADY 10U**  
 PONDEROSA LADY-G 11P

ULTRASONIC WEIGHTS	BW	WW	YW	Q-Select: Leptin/PMCH/1GF2/CRH			
	85						
	Rump	Rib	Ribeye	IMF	Scan Age	Scan Wt	Homo Polled/Hetro Blk
							Non-carrier



JSF 2C

## JSF *Midnight Lady* 2C

100%

JSF 2C

5435

February 22, 2015

LEGACY UNRIVALED 12U  
**CODIAK HEAR THE GHOST GNK 22Z**  
 CODIAK URSULA GNK 3U  
 HEARTRIDGE ARIES 01W  
**PONDEROSA SPOTS A ROARIN 19Y**  
 PONDEROSA MIDNIGHT LADY 10U

ULTRASONIC WEIGHTS	BW	WW	YW	Q-Select: Leptin/PMCH/1GF2/CRH			
	93	605	1060				
	Rump	Rib	Ribeye	IMF	Scan Age	Scan Wt	Homo Polled/Homo Blk
	0.43	0.43	10.5	6.64	13 mo		Non-carrier





CCC 2X

## COLD CREEK *Skylark* 2X

87.5% CCC 2X 3438 February 21, 2010

ALMOST A RANCH MUSTANG GT 1R  
**CALAMASUE 46U**  
 CALAMASUE 17P  
 P.A.R. MERIT 157M  
**CANDY OF CCC 02P**  
 MAY FLOWER OF P.A.R. 62M

ULTRA SOUND WEIGHTS	BW	WW	YW	Q-Select: Leptin/PMCH/1GF2/CRH		
	70					
	Rump	Rib	Ribeye	IMF	Scan Age	Scan Wt
						Homo Polled/Homo Blk Non-carrier



SDS 7U

## REDNECK RANCH'S *Ursula* 7U

100% SDS 7U 2731 April 7, 2008

UPTO SPECS PACER 10P  
**REDNECK RANCH'S SAM 7S**  
 ASPEN ACRES LINDA LOU 10L  
 P.A.R. MOO FASSA 03M  
**REDNECK RANCH'S SALLY 2S**  
 PRAIRIE HILL NAUGHTY GIRL 90N

ULTRA SOUND WEIGHTS	BW	WW	YW	Q-Select: Leptin/PMCH/1GF2/CRH		
	65					
	Rump	Rib	Ribeye	IMF	Scan Age	Scan Wt
						Homo Polled/Homo Blk Non-carrier



WES 260Y

## *Yasemin* OF UNEEDA 260Y

100% WES 260Y 3635 March 22, 2011

P.A.R. TOUCH DOWN 600T  
**UNEEDA WONDERBAR 05W**  
 LANDRY OF P.A.R. 5L  
 CODIAK OSCAR GNK 8S  
**UNA OF UNEEDA 60U**  
 PRAIRIE HILL MISS 60M

ULTRA SOUND WEIGHTS	BW	WW	YW	Q-Select: Leptin/PMCH/1GF2/CRH		
	75					
	Rump	Rib	Ribeye	IMF	Scan Age	Scan Wt
						Homo Polled/Homo Blk Carrier



JSF 37D

## JSF *Essence* 37D

93.8% JSF 37D 6232 March 17, 2016

A & W 15R  
**HS UNTAPPED 3A**  
 NOTTA 2R PRETENDER 4T  
 RIVER HILL SHOW BIZ 93S  
**MONNERY RIVER JFN 6X**  
 MONNERY RIVER 6R

ULTRA SOUND WEIGHTS	BW	WW	YW	Q-Select: Leptin/PMCH/1GF2/CRH		
	78	710	870			
	Rump	Rib	Ribeye	IMF	Scan Age	Scan Wt
	0.37	0.25	8.9	4.06		



*Leadership*  
is not about being the *best*

*Leadership*  
is about making everyone else *better*





**Return Undeliverable  
Canadian Addresses To:**

**T Bar C Cattle Co. Ltd.  
Box 2330  
Warman, SK S0K 4S0**

